



• PMMA/PC
•
• ABC/PC / /





005/020

021/025

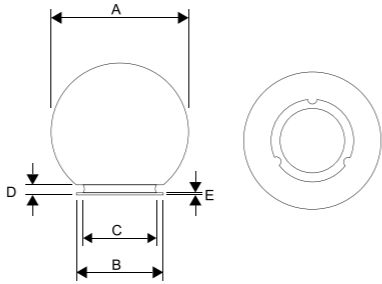
026/040

005/020





	()				
	A	B	C	D	E
SP15G-OP	150	95	91	15	3
SP20G-OP	200	95	91	15	3
SP25G-OP	250	120	112	13	4
SP30G-OP	300	140	130	15	4
SP35G-OP	350	150	140	15	5
SP40G-OP	400	150	140	15	5





SP20R-OP

SP25R-OP

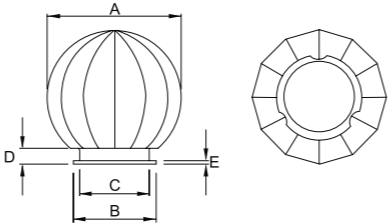
SP30R-OP



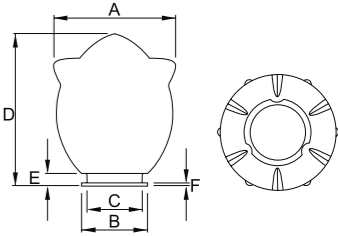
LT20G



	()				
	A	B	C	D	E
SP20R-OP	200	95	91	15	2
SP25R-OP	250	120	112	15	3
SP30R-OP	300	140	130	15	3

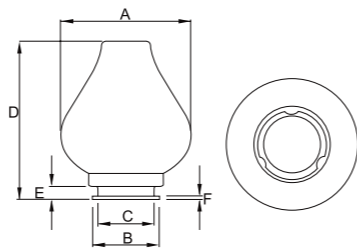


	()					
	A	B	C	D	E	F
LT20G	210	120	112	260	15	3





	()					
	A	B	C	D	E	F
GD004	200	95	91	225	15	2

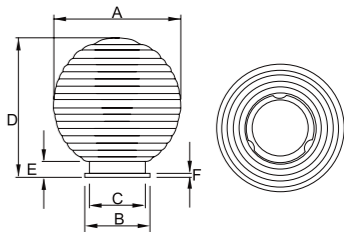


GD005-B-250

GD005-B-300

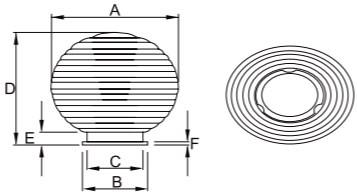


	()					
	A	B	C	D	E	F
GD005-B-250	200	95	91	205	15	2
GD005-B-300	250	120	112	255	15	3

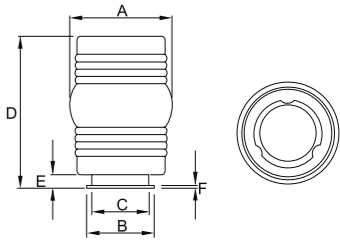


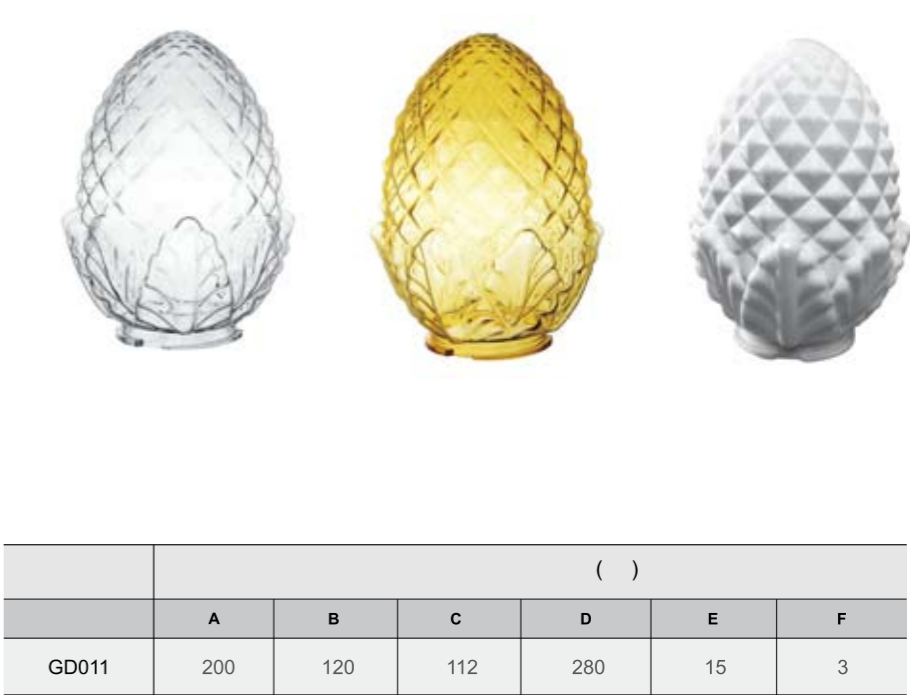
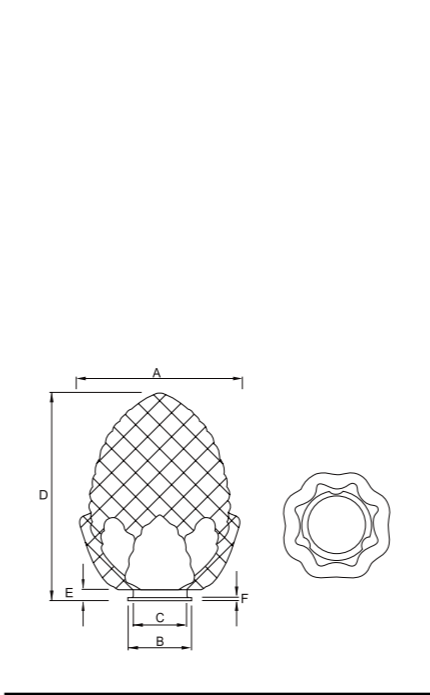
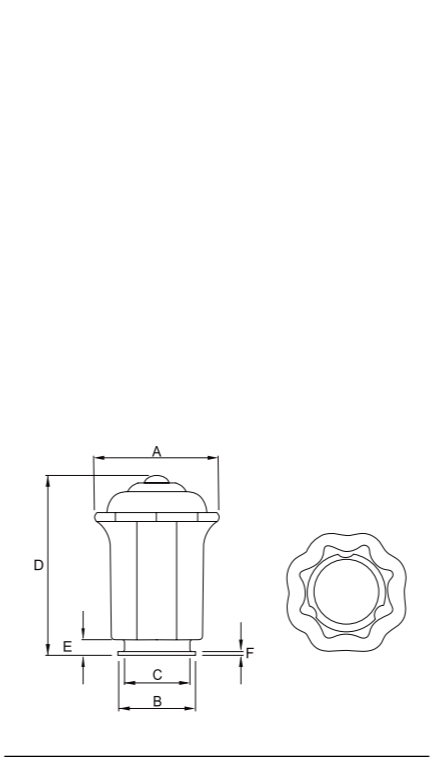


	()					
	A	B	C	D	E	F
GD006	325	120	112	235	15	3



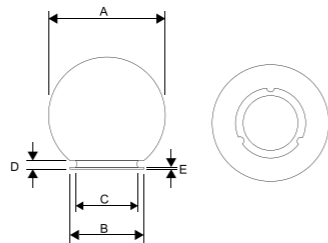
	()					
	A	B	C	D	E	F
GD007	150	95	91	200	15	2



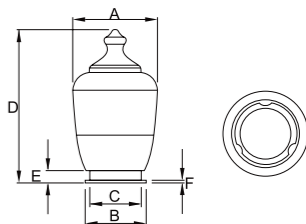


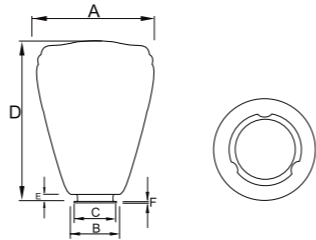


	()				
	A	B	C	D	E
GD012	250	120	112	15	3



	()					
	A	B	C	D	E	F
GD013	185	120	112	290	15	3

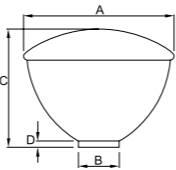




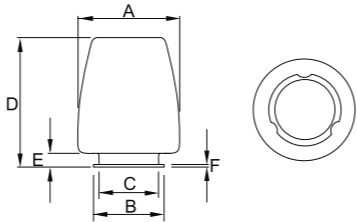
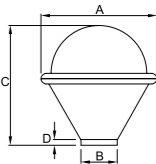
	()					
	A	B	C	D	E	F
GD014	235	120	112	300	15	3



	GD017	
	/	/
	H290X Ø 220	H360X Ø 240
	120	140

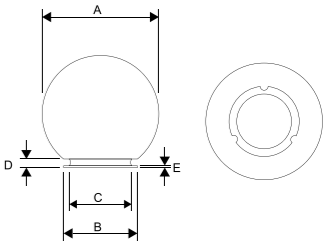


	()					
	A	B	C	D	E	F
GD015	360	150	365	5	/	/



	()					
	A	B	C	D	E	F
GD016	130	95	91	150	15	2

	()					
	A	B	C	D	E	F
GD018	290	150	330	15	/	/



	()				
	A	B	C	D	E
GD021	200	95	91	15	2



	GD019
	/ /
	H305X Ø 220
	120

	GD022	
	/ /	
	H250X Ø 230	H300X Ø 270
	120	140



	GD020
	/ /
	H420X Ø 380
	140

	GD023
	/ /
	H215X Ø 180
	95

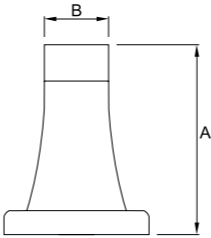


GD-B-#95

GD-B-#120

GD-B-#140

GD-B-#150



SN-130

SN-184

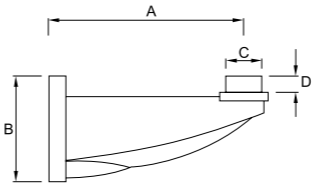
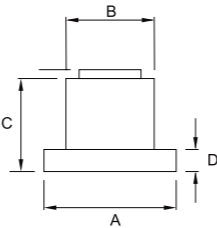
	()				
	A	B	C	D	
SN-130	130	60	/	/	Max \varnothing 200
SN-184	184	60	/	/	Max \varnothing 400



NK-230

NK-310

	()				
	A	B	C	D	
GD-B-#95	100	60	65	20	\varnothing 150 \varnothing 200
GD-B-#120	125	70	55	18	\varnothing 250
GD-B-#140	145	70	65	18	\varnothing 300
GD-B-#150	155	70	60	30	\varnothing 350 \varnothing 400



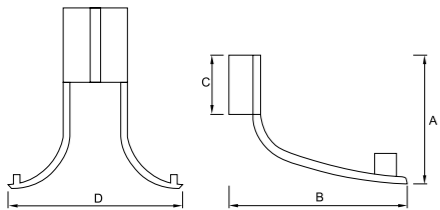
	()				
	A	B	C	D	
NK-230	230	100	60	32	Max \varnothing 300
NK-310	310	100	60	47	Max \varnothing 400



GD-B-W3



GD-B-W4

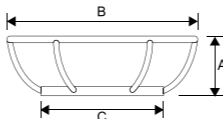


	()				
	A	B	C	D	
GD-B-W3	270	270	125	/	Max \varnothing 300
GD-B-W4	270	270	125	450	Max \varnothing 300



GD-B-F1

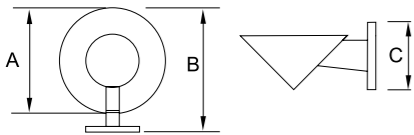
GD-B-F2



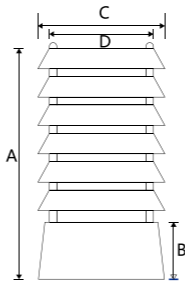
	()			
	A	B	C	
GD-B-F1	122	290	160	\varnothing 250
GD-B-F2	147	340	180	\varnothing 300



GD-B-W5



	()		
	A	B	C
GD-B-W5	145	215	110



GD-B-R1

GD-B-R2

GD-B-R3

GD-B-R4

GD-B-R5

	()				Flats 层数	Iron 原料	
	A	B	C	D			
GD-B-R1	168	48	85	50	3	Lron	\varnothing 200
GD-B-R2	190	69	103	68	4	Lron	\varnothing 250 \varnothing 300
GD-B-R3	220	69	122	68	5	Lron	\varnothing 300 \varnothing 350
GD-B-R4	270	70	122	80	6	Lron	\varnothing 350 \varnothing 400
GD-B-R5	293	78	157	93	7	Lron	\varnothing 500

/



GD-B-POLE

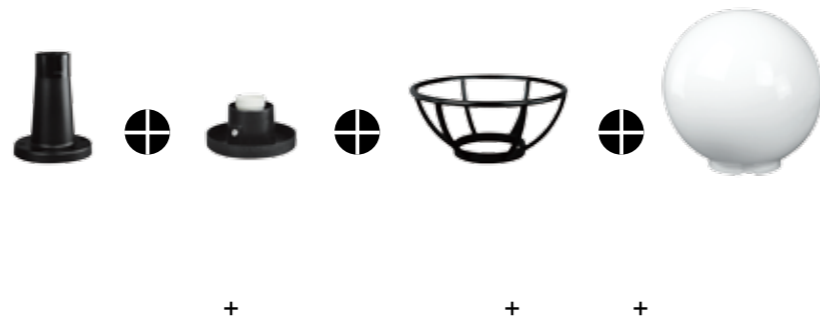
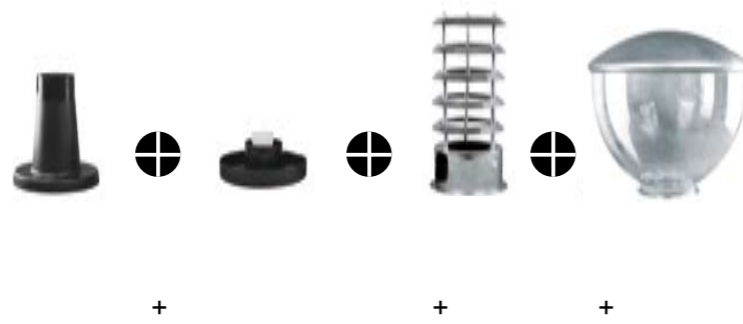
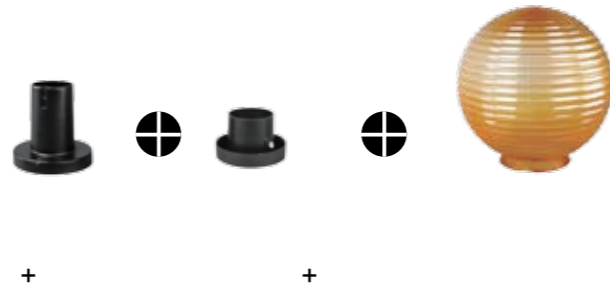


GD-B-BASE

	()	
GD-B-POLE	0.5m/1m/1.5m/1.8m	Ø 60
GD-B-BASE	H170X Ø 160	

80







/



+

+



+

+



+

+

+



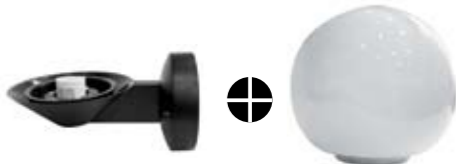
+

+



+

+



+



(/)



(/)





(/)



(/)





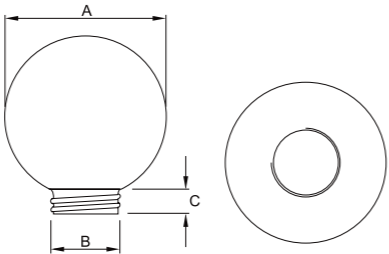


GD001-S-150

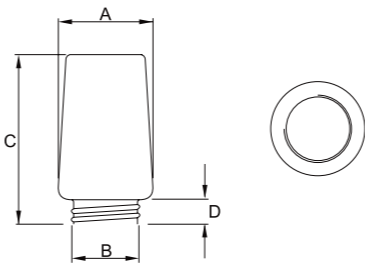
GD001-S-200



	()		
	A	B	C
GD001-S-150	150	80	20
GD001-S-200	200	80	20

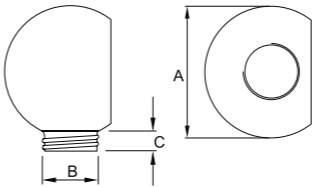


GD002-S-JAR



	()					
	A	B	C	D	E	F
GD002-S-JAR	100	80	175	20	/	/

GD001-S-H-200



	()					
	A	B	C	D	E	F
GD001-S-H-200	200	80	20	/	/	/



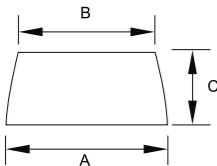
GD-S-C1



GD-S-C2



GD-S-C3

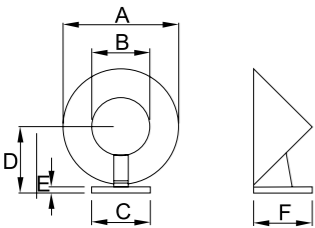


	()		
	A	B	C
GD-S-C1	100	90	45
GD-S-C2/GD-S-C2	120	90	45

Wall Lamp Holder
For Screw Neck 螺口壁灯座》



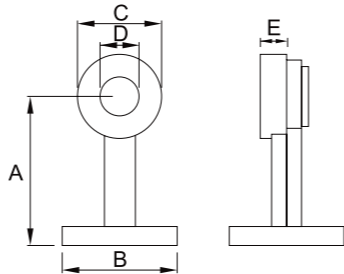
GD-S-W1



	()					
	A	B	C	D	E	F
GD-S-W1	230	80	105	40	8	105



GD-S-W2

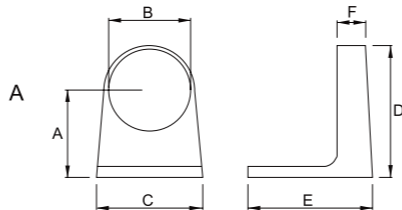


	()					
	A	B	C	D	E	
GD-S-W2	140	115	80	40	25	

"7"



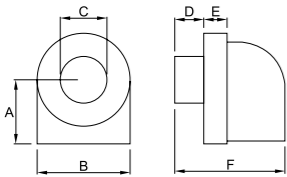
GD-S-W3



	()					
	A	B	C	D	E	F
GD-S-W3	105	80	110	142	138	20



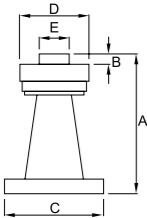
GD-S-W4



	()					
	A	B	C	D	E	F
GD-S-W4	60	95	48	28	25	110



GD-S-S1



	()				
	A	B	C	D	E
GD-S-S1	150	10	115	90	30



GD-S-C1
150mm/200mm



GD-S-C1 150mm



GD-S-C2 200mm

GD-S-C2
150mm/200mm



GD-S-C2 150mm



GD-S-C2 200mm

GD-S-C3
150mm/200mm



GD-S-C3 150mm



GD-S-C3 200m

GD-S-W1
150mm/200mm



GD-S-W1 150mm



GD-S-W1 200mm



GD-S-W2
150mm/200mm



GD-S-W2 150mm



GD-S-W2 200mm



GD-S-W2



"7"
150



150

GD-S-S1
150mm/200mm



150



200

